



## R.A. Check-in 19 Autumn 2 2017



Dear Colleagues,

Welcome to our 19th edition of our Check-in. We now have 19 letters that are full of hints, links and ideas to support the Restorative work you are doing in your setting. One of the tools you will find really helpful is our website; [www.restorativestockport.co.uk](http://www.restorativestockport.co.uk)

### Quote of the season:



### SHOWCASE OFFERS

 Please find full details on our website- [www.restorative stockport.co.uk](http://www.restorative stockport.co.uk)

Interested in developing restorative approaches in your school? Why not arrange to visit one of our restorative showcase schools in Stockport to see RA in action. These schools are happy to share where they are on their RA journey. They may be at the very start, or could have been investing in their restorative approaches for some time. However they all have something exciting and useful to share with you that could help and inspire you with your next RA steps. Then the offers are divided into 5 areas; RA in Early Years, Circles in Action, RA champions, RA in special schools and Restorative Leadership & Strategic Change

Showcase schools will only be advertised on our [www.restorativestockport.co.uk](http://www.restorativestockport.co.uk) website under the drop down menu- Showcase Schools. Move across to the right and you will see the offers arranged under different heading depending on what is being offered.



### Circles in action

These schools would love to share their experiences of introducing, developing and sustaining circle work within their setting. Please use the contact details provided for each setting to arrange your visit.

- Arden Primary School: contact [chris.shaw@arden.stockport.sch.uk](mailto:chris.shaw@arden.stockport.sch.uk) or [claire.terry@arden.stockport.sch.uk](mailto:claire.terry@arden.stockport.sch.uk)
- Vernon Park Primary School: contact [headteacher@vernonpark.stockport.sch.uk](mailto:headteacher@vernonpark.stockport.sch.uk) or [holly.furber@vernonpark.stockport.sch.uk](mailto:holly.furber@vernonpark.stockport.sch.uk)
- Nevill Road Junior School: contact: [headteacher@nevillroad-jun.stockport.sch.uk](mailto:headteacher@nevillroad-jun.stockport.sch.uk)
- Norris Bank Primary School: contact [headteacher@norrisbank.stockport.sch.uk](mailto:headteacher@norrisbank.stockport.sch.uk) or [Natalie.evans@norrisbank.stockport.sch.uk](mailto:Natalie.evans@norrisbank.stockport.sch.uk)
- Castle Hill School: contact [matthew.drogie@castlehill.stockport.sch.uk](mailto:matthew.drogie@castlehill.stockport.sch.uk)



### RA champions

These schools would love to share their experiences of introducing and developing the role of Restorative champions with their pupils.

- Dial Park Primary School: contact the headteacher via email- [james.clark@dialpark.stockport.sch.uk](mailto:james.clark@dialpark.stockport.sch.uk)
- Arden Primary School: contact [chris.shaw@arden.stockport.sch.uk](mailto:chris.shaw@arden.stockport.sch.uk) or [claire.terry@arden.stockport.sch.uk](mailto:claire.terry@arden.stockport.sch.uk)
- Castle Hill School: contact [matthew.drogie@castlehill.stockport.sch.uk](mailto:matthew.drogie@castlehill.stockport.sch.uk)

- Norris Bank Primary School: contact [headteacher@Norrisbank.stockport.sch.uk](mailto:headteacher@Norrisbank.stockport.sch.uk) or [Natalie.evans@norrisbank.stockport.sch.uk](mailto:Natalie.evans@norrisbank.stockport.sch.uk)



## Restorative Leadership and strategic change

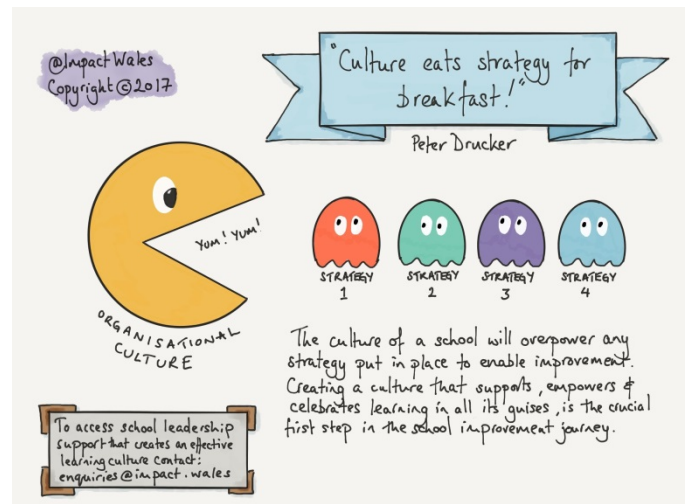
These schools would love to share their experiences of introducing, developing and sustaining restorative approaches within their setting, with particular advice around strategic whole school change.

- Dial Park Primary School: contact the headteacher via email- [james.clark@dialpark.stockport.sch.uk](mailto:james.clark@dialpark.stockport.sch.uk)
- Vernon Park Primary School: contact [headteacher@vernonpark.stockport.sch.uk](mailto:headteacher@vernonpark.stockport.sch.uk) or [holly.furber@vernonpark.stockport.sch.uk](mailto:holly.furber@vernonpark.stockport.sch.uk)
- St Christopher's RC Primary School: contact [jennifer.eccles@st-christophers.stockport.sch.uk](mailto:jennifer.eccles@st-christophers.stockport.sch.uk)
- Castle Hill School: contact [matthew.drogie@castlehill.stockport.sch.uk](mailto:matthew.drogie@castlehill.stockport.sch.uk)
- Nevill Road Junior School: contact [headteacher@neville-road-jun.stockport.sch.uk](mailto:headteacher@neville-road-jun.stockport.sch.uk)
- Norris Bank Primary School: contact [headteacher@Norrisbank.stockport.sch.uk](mailto:headteacher@Norrisbank.stockport.sch.uk) or [Natalie.evans@norrisbank.stockport.sch.uk](mailto:Natalie.evans@norrisbank.stockport.sch.uk)

We are also waiting to hear back from Broadstone, Banks Lane Juniors & due to chat to Anne @ Hazel Grove Primary. Also are you lovely pre-school able to offer something under early years again? We would like to really encourage schools to proactively book onto some of these ASAP- This is a fantastic resource and we need to make sure we use it.

## Think piece

There is an amazing practitioner Helen Bevan who specialises in tweeting posters and diagrams about leadership and restorative practice. She found this thought from impact Wales



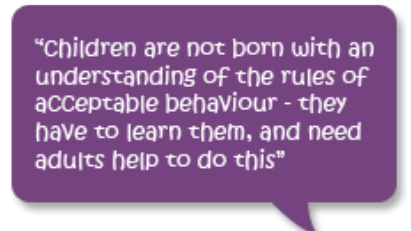
### What Jen has been up to this half term:

- RA Champs training completed with Year 5 at St Mary's Marple Bridge, Pownall Green and Dial Park.
- Delivering the first of a series of RA staff meetings at Nevill Road Juniors to deepen understanding of RA.
- Planning meetings with Cheadle Primary and Hursthead Juniors to further develop RA at Staff meetings planned for the Spring Term.
- Delivering the first 1 Day RA Circles training with fantastic staff from Vernon Park, Nevill Road Juniors, St Mary's Marple Bridge, Lane End, St Christopher's, Bolshaw and Moorfield.
- Planning meeting with Helen Grimdsitch to take an active role in developing the role of RA in Early Years settings throughout Stockport.

Jen has also been working on a quotes competition that she is currently running at St Christopher's with staff. The idea behind this is to work 'WITH' staff in developing their own understanding of children's behavioural learning and development. And to make an eye-catching display in our staffroom of course! Our team is also on the look out for quotes and ideas from our schools.

This is the competition Jen posed. You could use this in your setting

*I love a good quote about children's behavioural learning and development. I would like to fill this board with them, but... I NEED YOUR HELP. Please find and print out a quote*



that relates to the above subject, one that you'd like to share with others. Pop your name on it and stick it on this board. You can enter as many times as you like.



#### Here is Sarah's 'To do or has been done' RA list

- Updating the RA picture at the PSHE & Wellbeing Network
- Delivering the first of our Autumn 3 Day RA training courses with lovely people from Vernon Park, Vale View, High Lane, Warren Wood, Abingdon, Ladybrook, Cheadle, Offerton Hall Nursery & Hazel Grove Primary
- Exciting 'watch this space' filming with The Restorative Justice Council (RJC) and some of our Stockport RA ambassador pupils
- One day RA INSET with the whole Warren Wood team
- Delivering a morning session at the DHT's conference on Restorative Leadership
- Speaking to and visit schools to develop our Showcase offers
- Continuing updating our [www.restorativestockport.co.uk](http://www.restorativestockport.co.uk) website
- Delivering staff meetings to keep the RA focus alive and kicking at BSS, Bridge Hall & Vernon Park
- Delivering twilight session to Windlehurst staff
- Supporting Jen and the staff at St Christopher's with sharing RA with their wider school community with a parents evening event.
- Meetings at St Marys Stockport, Werneth High school and Lark Hill to discuss and plan the next RA steps
- Midday & TA RA training at Mersey Vale & Vernon Park.
- Two RA training sessions for Governors
- Catching up with our RA training colleagues at Stockport Family
  - Looking forward to an RA INSET with BSS & Oakgrove to be led by the Chief Executive of the RJC Chris Straker.



**Jenny** is still at Moorfield and still slowly disappearing under paper but still keeping her RA hand in through training, visits, conversations and writing stuff.

#### From Deborah Woodcock's weekly check-in:

*I am enormously proud to announce that Leanne Baines and Louise Watson of the ASPIRE team have been awarded gold awards at the national Social Worker of the Year Awards on Friday evening. Congratulations and thank you to you both and to the work of the ASPIRE team, which is being recognised and commended in many forums.*

*Headteacher was impressed with the way a school aged plus worker convened a Team around the Child meeting to aid a positive transition between two primary schools, noting how it enabled the new primary school to have a full picture of the family's strengths and area for support.*

Happy Christmas from your Education RA team and we wish you all the best for 2018. We do hope your break is restful and restorative!

Best wishes

Jen, Janette, Jenny & Sarah

